

# The DX Shop

+44(0)1588 620126 [www.thedxshop.com](http://www.thedxshop.com)

...going the extra mile

## LINEARamp

### Gemini 70

432MHz 300W Solid State Linear Amplifier

## Gemini 70



Designed, manufactured and assembled entirely in the UK, the all new GEMINI range are solid state linear amplifiers with 300W output available in 6/4, 2 and 70cms versions.

The Gemini 70 is the latest version to be released and incorporates a state of the art combined RF and LPF board design on low loss Rogers 4350B material that ensures high efficiency and maximum out of band signal suppression.

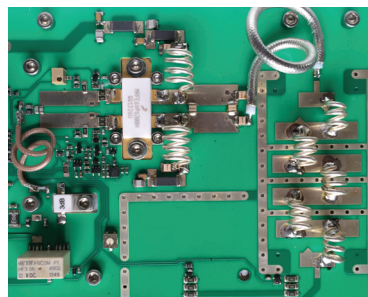
With an RF section designed exclusively for us by world class RF engineer Chris Bartram GW4DGU (of Mutek fame), Gemini uses the latest Freescale MRFE6VP6300H LDMOS device for high performance and maximum ruggedness. This, combined with built in protection for overdrive, high SWR and over-temperature ensures solid reliable performance at high outputs for long periods.

GEMINI incorporates a complete soft start 50V linear power supply providing a fully turn-key integrated solution.

The Gemini 70 has a sequenced switchable preamplifier control from the front panel providing either a rear panel output or BIAST 13.8v feed on receive with overcurrent reset.

Gemini's advanced cooling design ensures high outputs for long periods can be maintained without risk of overheating - ideal for data modes, EME and contest use.

- 300W output solid state amplifier
- Freescale MRFE6VP6300H LDMOS
- Integral 50V Linear Power supply with soft start
- Drive requirements 5-25W (specified at purchase)
- Advanced cooling for MGM operation
- Full protection for overdrive/swr/temperature
- Switchable preamplifier control with BIAST feed option
- All aluminium chassis
- Two year warranty



State of the art design RF board & LPF on Rogers 4350B

### Specifications

Frequency coverage	430-440MHz
Power output @ 1dB compression	300W
Power output @ -30dB IMD3	>250W
Input power	5-25W (specified when ordered)
Spurious outputs	<-70dB wrt 300W
Input return loss	>13dB
Efficiency (RF)	>65%
RF Device	1 x Freescale MRFE6VP6300H
Protection	Overdrive, SWR, Over Temperature
Relays	Coaxial Output
Metering	RF output
Power requirements	230V AC 50/60Hz
Dimensions mm	270w x 300d x 120h
Weight	10Kg

Price excl. VAT: £915.83 Price incl. VAT: £1099.00

SPID Rotators • QRO Coaxial Relays • Low Pass Filters • Aerial splitters • Westflex • Andrew Helix Coaxial • Signalink

The complete Linear Amp range • Discovery 6 • Discovery 2 • Discovery 70 • Pioneer • Challenger • Gemini 4,2,70